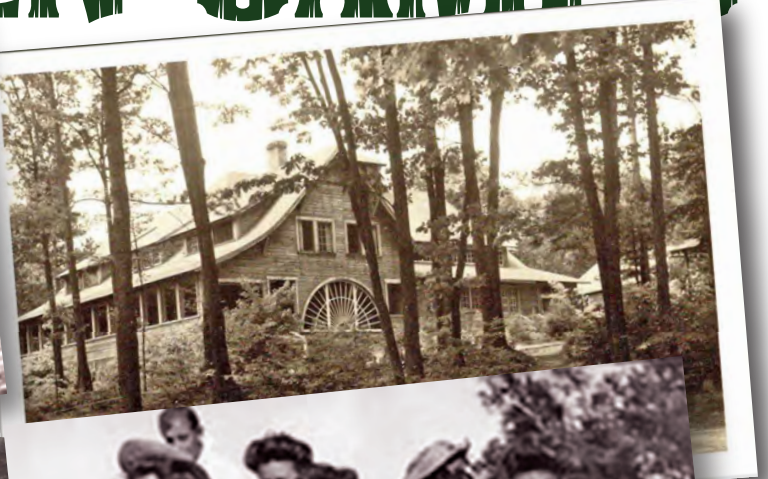


**Margie
Howe Emmons**
presents

ROCKYWOLD- DEEPHAVEN CAMPS



WEDNESDAY - JULY 24 - 5:30

PLYMOUTH
HISTORICAL
SOCIETY

PROUDLY CELEBRATING

50
YEARS
1974-2024

PRESERVING YESTERDAY &
TODAY FOR TOMORROW

Join us to learn about this Lakes Region tradition. Listed on the National Register of Historic Places, its rustic camping experience has been calling campers back to the shores of Squam for generations. Discover its rich history, its connections to Plymouth, and how RDC has adapted to the changing times while maintaining the essence of its allure for over 100 years later.

Plymouth Historical Museum & Memory House

In the Old Webster Courthouse, on Court Street, tucked behind Town Hall

FREE and Open to the Public SATURDAYS 10:00-1:00